



Twin Cities

Creation Science Association

Tuesday, November 20, 2012, 7:30 pm

"What is the Shelf-Life of a Dinosaur Bone?"

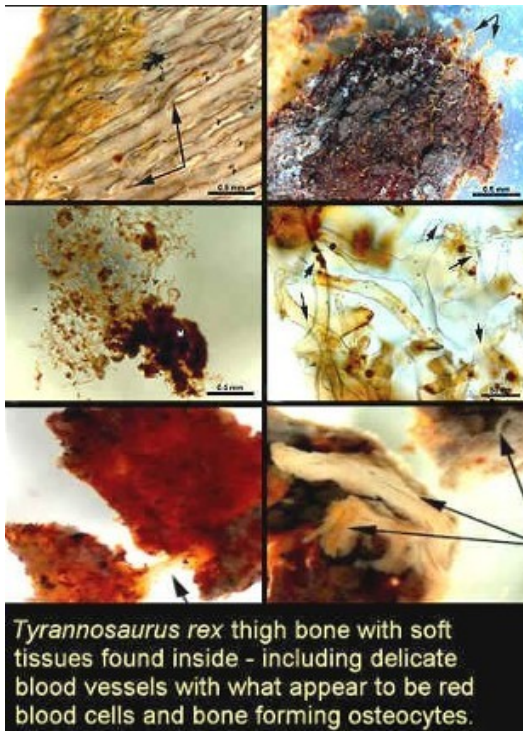
Dr. Kevin Anderson

Of Creation Research Society



Northwestern College, 3003 North Snelling, Roseville, MN, Totino FAC2128 (old 116)

For updates and more information, visit www.tccsa.tc



The Creation Research Society has initiated a research program to investigate the presence of tissue in dinosaur fossils. Specifically, we have obtained fossilized vertebrae, ribs, and a nearly complete supraorbital horn from Triceratops. Analysis of this material has revealed visible microstructures that appear to be lamellar bone osteocytes. Our data is consistent with previous reports of intact cells evident in compact bone tissue that has not yet fossilized. Evidence of such soft tissue still remaining in dinosaur fossils dated at 65 – 80 million years directly challenges standard geological time scales. Instead, these specimens are fully consistent with a recent deposition.

Sponsored by the Twin Cities Creation Science Association
Free and Open To The Public For More Information Visit www.tccsa.tc