

INDEX

[Beginnings of the 1st Museum](#)

[Beginnings of the 2nd Museum](#)

[Dinosaur Gallery B](#)

[Megalithic World Gallery A](#)

[Storage Room](#)

[2013 Feb Museum Visitors](#)

[Military Memorial](#)

[Flyers](#)

[Guidelines and Scavenger Hunt](#)



2013 Jan - New Adventure Safaris Dinosaur Learning Center Displays

Remodeling was started in January

Review of Past History
First Museum in our Living Room

Feb. 2010



Overview of the dining area.



Microscope to see God's invisible creation.



Overview of the living room.

We had people over who were interested and some now provide support for the building rental.

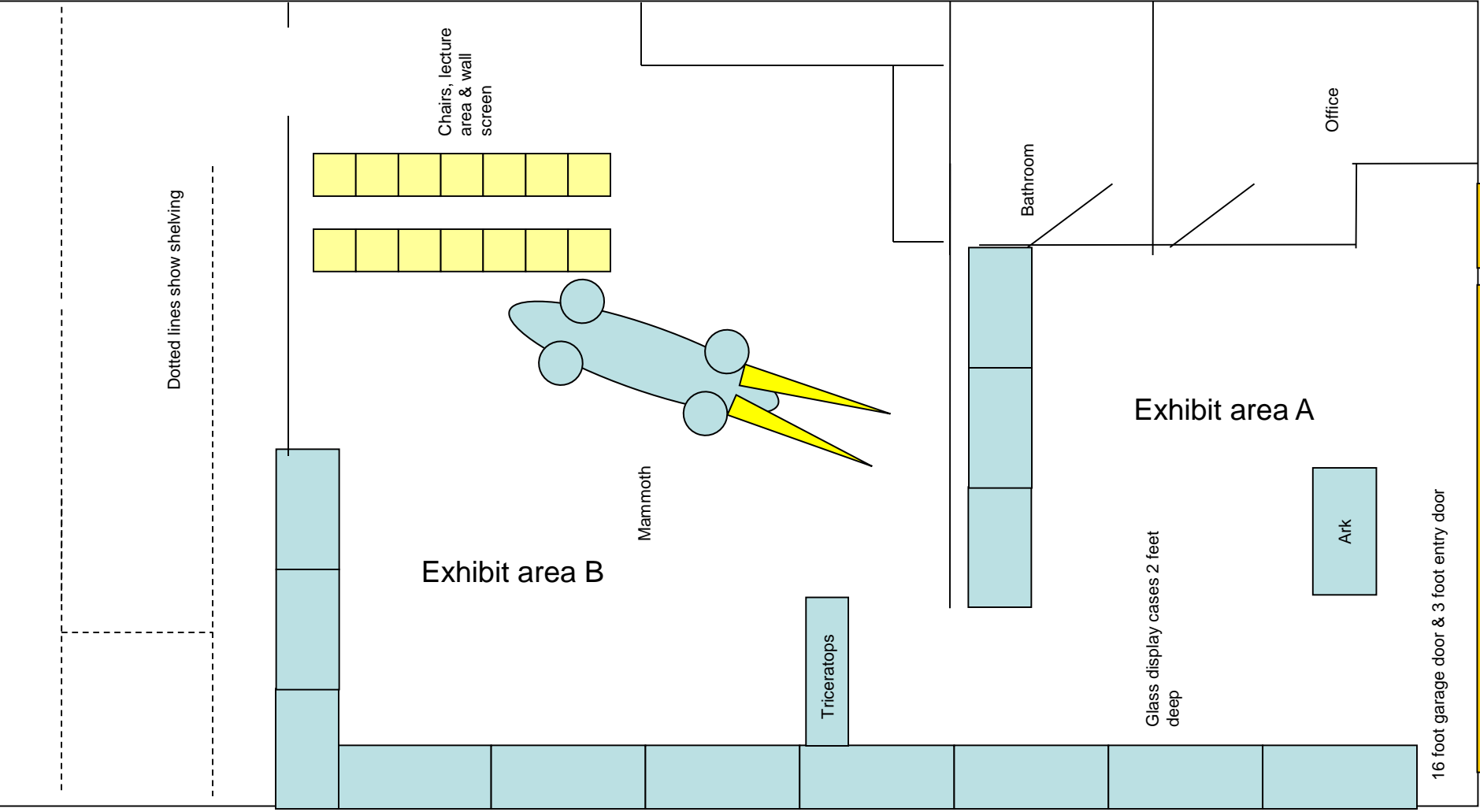




Second Museum Jay Hardy's Ware House

Started Oct, 2010

The original "Plan."



The ware house.



25x45 room



NOT A FLOOR / NO STORAGE PERMITTED
MAXIMUM LIVE LOAD 100PSF





Moving in.

Megalithic Museum Feb. 2013

How life started after the Flood.

I have put the main photos of the exhibit at the beginning for an overview. The rest is the behind the scenes and how I made some of the models and exhibits. This is for those who might want to copy what I did for their own museum.

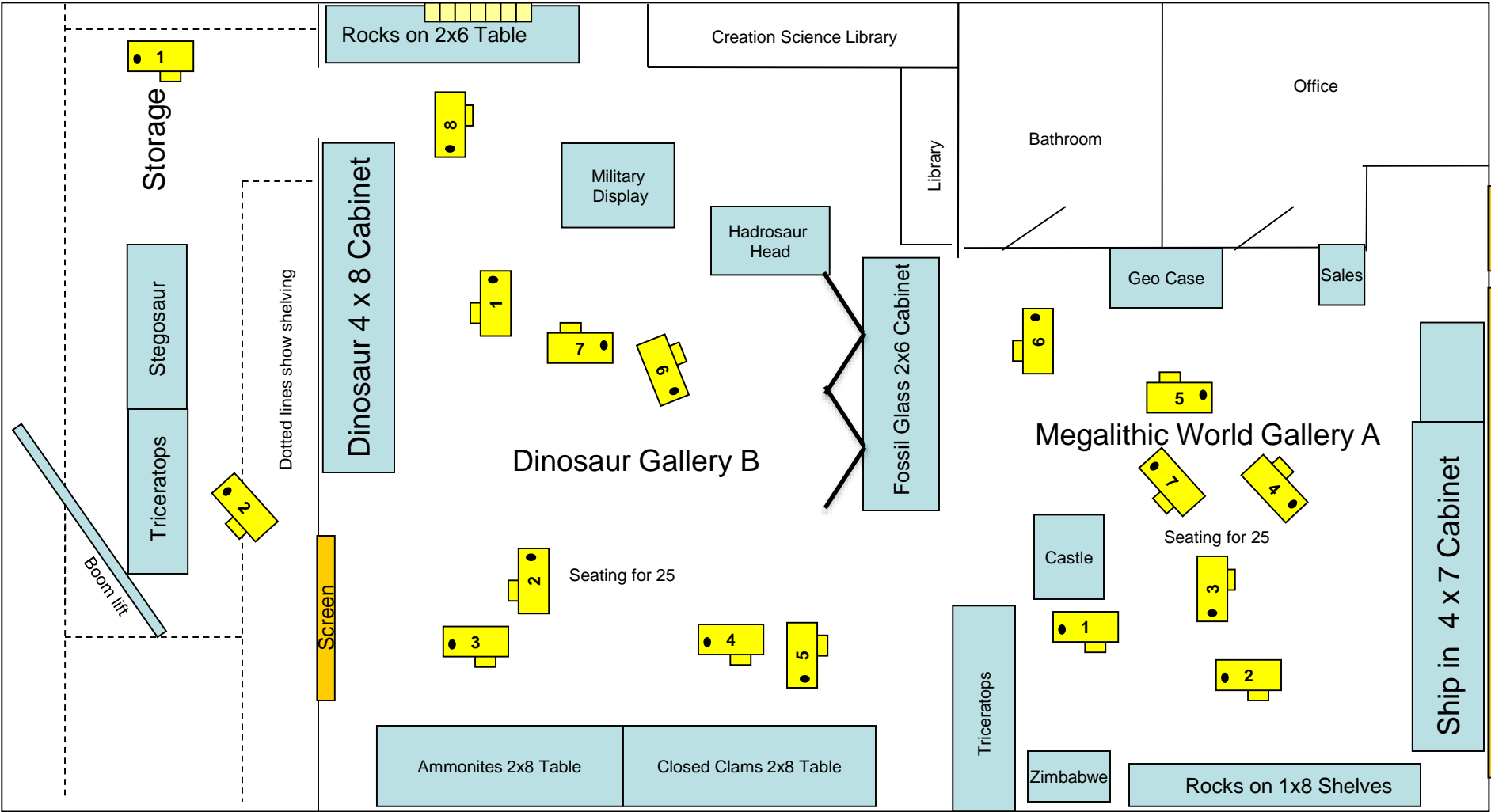
The Dinosaur Gallery B

This is a permanent display but has been remodeled in February 2013 with more bones exhibited that were in storage. More signage has been added for self guided tours.

The Feb. 2013 "Plan."



Camera position for photos



Bones & reproductions from 18 years of dinosaur digs.

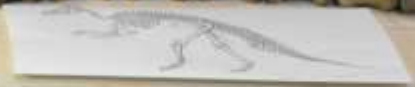


1



Anterior Tibial Bone

You can touch this bone.



Posterior Tibial Bone



Anterior Tibial Bone

Metatarsals

Posterior Tibial Bone

Toe Claw

Vertebral Thoracic Vertebra

Human Footprint

Thighbone Vertebra

Human Toe Bone

Skull

Please do not touch.

Skull Bone

Femur

You can touch this bone.

Tibia

Chewed Bone

1

Multituberculata Tail Vertebrae



Very Poorly Preserved
[Faint text describing the specimen]



Trilobites Vertebra
Boston 90 100

Handwritten label



Multituberculata Tail Bone

Handwritten label



Apatorhinus Tail Vertebrae

1181
BM3E
SW4
Kub
Kevin
Ben Kronholz

Please do not touch.



Femur



Coprolite



Dinosaur Coprolite



Dinosaur Coprolite



Coprolite purchased by Ross
[Faint text describing the coprolite]

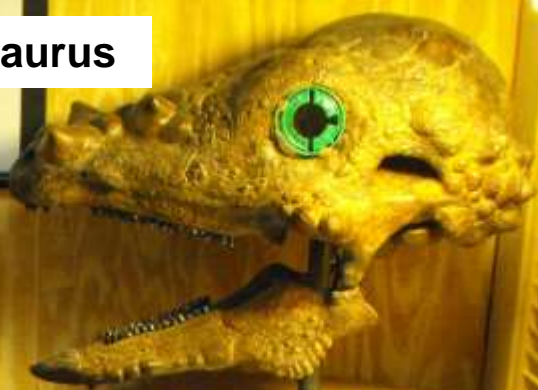
Coprolite - This is fossilized animal manure. It is hard as the ground like a new penny.
The size will vary from a few mm to a few cm. It is found in the fossiliferous layers of
[Faint text describing the coprolite]

1



2

Pachycephalosaurus



Mosesaur

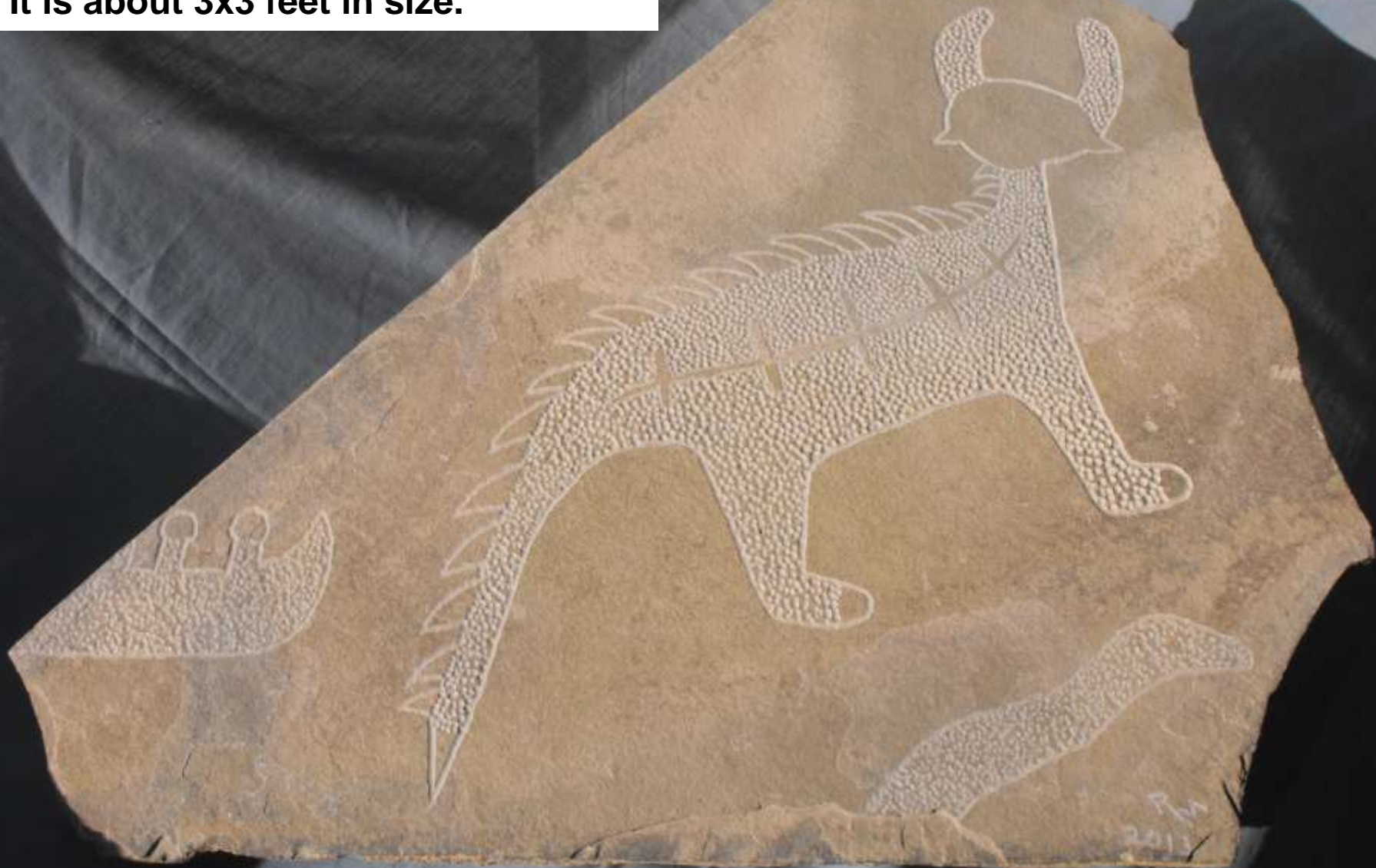


Whale bones

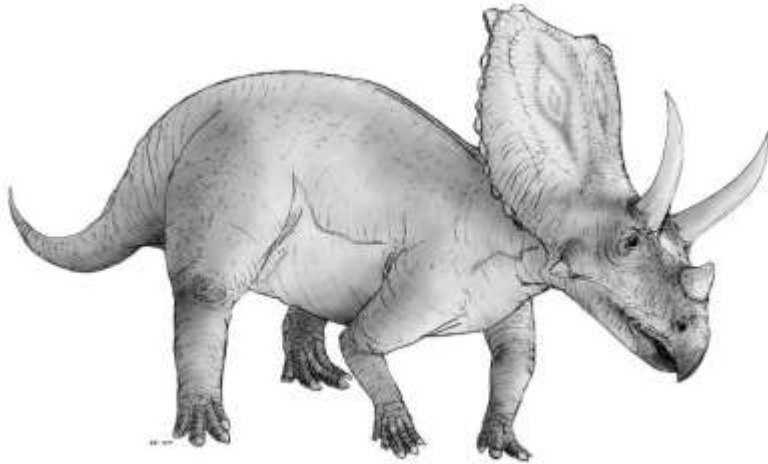


Mishipishu Petroglyph by Russ

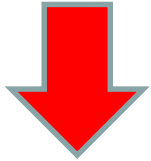
Russ made this from a piece of ½ inch sandstone using a die grinder. It is about 3x3 feet in size.



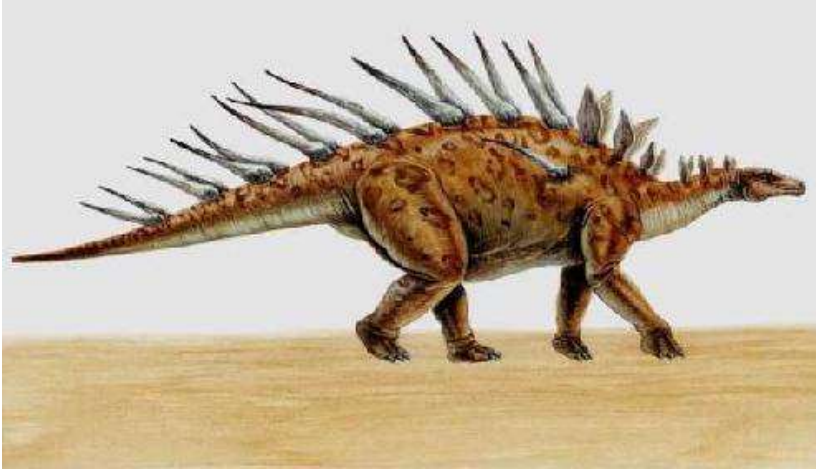
Mishipishu Petroglyph on the North Shore of Lake Superior



Ceratopsian - *Chasmosaurus belli* This medium sized horned dinosaur was a species of the Chasmosauridae, or long frilled ceratopsians. Note the cheek horns on the side of the face similar to Mishipishu .



Could this be a species not yet found in the fossil record? It has two brow and cheek horns but no frill. The Indian petroglyph is called Mishipishu or “water panther” of Lake Superior. It had a row of spikes down it’s back like Kentrosaurus. Maybe Mishipishu is a new dinosaur species with some characteristics similar to both the dinosaurs shown. He may have liked living in the water like a hippopotamus or water buffalo. The spikes might look like sticks in the water and help camouflage the animal.



Kentrosaurus was a stegosaurid dinosaur. Its fossils have been discovered in Africa. It is thought to be closely related to the **Stegosaurus**. Kentrosaurus had back & tail spikes instead of the bony plates. The site does not say if a head was found so this picture may be speculation and the head on Mishipishu might be a better interpretation.

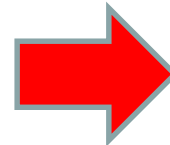


Photo taken by Bob Helfinstine with his nephew. This was painted possibly with a mixture of animal blood and clay. The museum example is a full sized model and has been cut into the rock with a die grinder. Indians would have used a “pecking” stone.

Model of a 3 foot Trilobite



3

Ammonite & Trilobite Case



Ammonite from Nepal
8000 ft. level from Don Slinger, Fp-128

Ammonite from Nepal
8000 ft. level from Don Slinger, Fp-128

Ammonite from Nepal
8000 ft. level from Don Slinger, Fp-128



Trilobites
There are over 10,000 varieties of Trilobites.
Many that you buy in stores come from Morocco. See the Fossil book for some of the varieties. p. F94-97

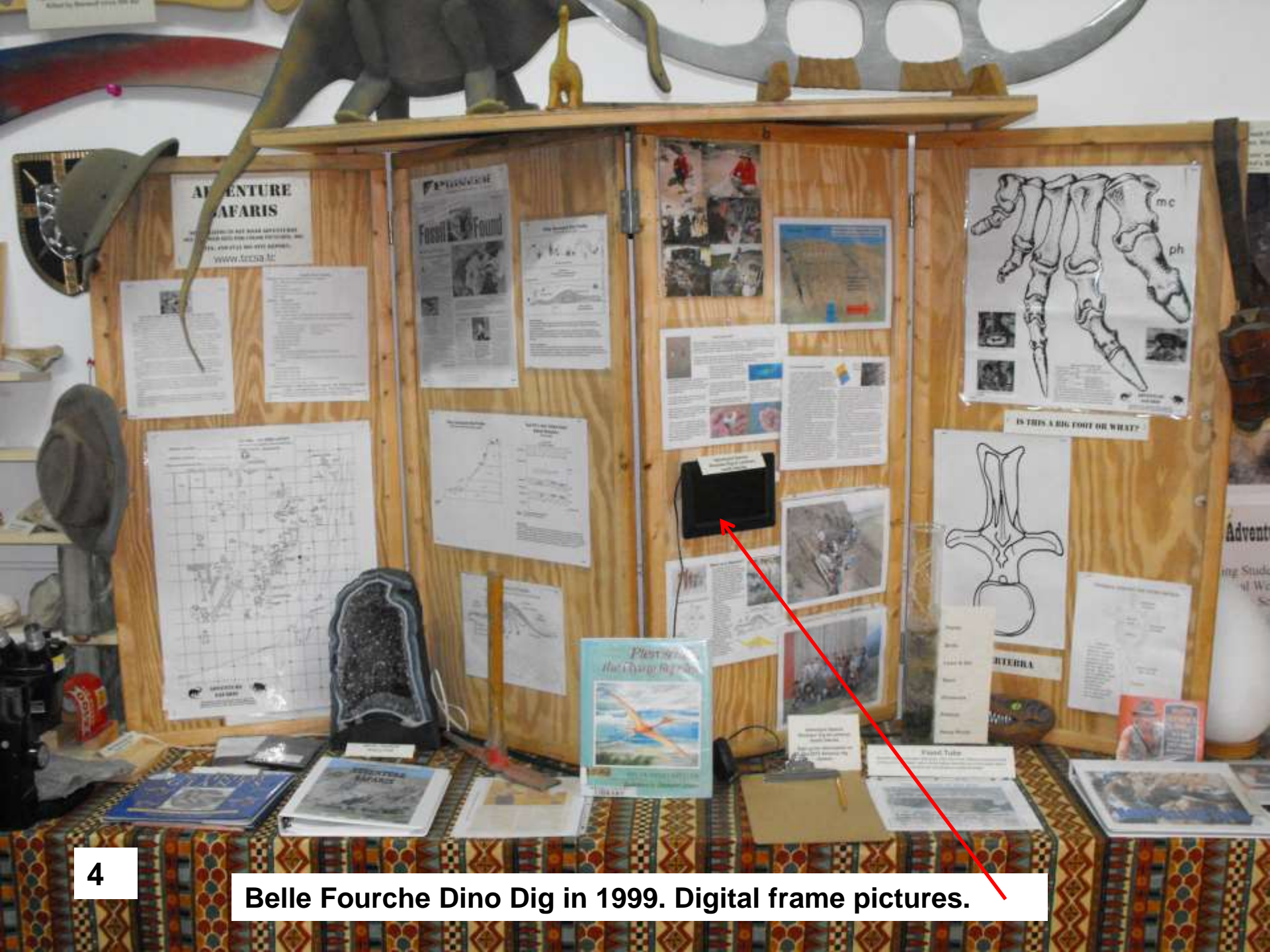


Megafodon Shark Tooth
Fp-133

Shell Limestone
Lampoc, p 126-28

Trilobite Crab
Fp-101





4

Belle Fourche Dino Dig in 1999. Digital frame pictures.



4

Closed Clam Shells



Cephalopod Fragment Fp. 278
Whitetail Sandstone, Lilydale, MN 1989



Sponge Fossil
Lilydale, MN, 1989 Science
Name - Receptaculites Fp. 78



Brain Coral Genesee Aquino
2012, Alameda, CA



Small fossil specimen label

Closed Clam Shells



Gastropod, Texas Fp. 111



Brachiopod Fp. 82 ff



Clam shell specimen label



Clam shell specimen label



Clam shell specimen label



Clam shell specimen label



Oyster - Inoceramus
Fp. 84 & 85 Fp. 120



Baculite Fp. 136



Clam shell specimen label



Clam shell specimen label



Clam shell specimen label



Clam shell specimen label



Scallop
Lake County, CA 2005 Fp. 118, 122



Cephalopod
Lilydale, MN, 1989 Fp. 124

Scaffolds
Lilydale, MN, 1989 Fp. 116 & 120

Baculite Fp.130

Barometers
To Margarita Island
El Estero, 1912

Clam

Clam
Salinas, CA 2012

Clam Cat Canyon, CA
Steve Salazar 2009

Clam Venture Co. CA 2012

Scallops
Lake Lynn, CA 2005 Fp.118



Crinoid
at looks
17



Cephalopod
Lloyd, MN 1885 Fp.124

Scallops

San Mateo, CA 2011 From Whittier
David Camp, Fp.116 & 122

Clam, Java, Indonesia
From Bobby Mikkelson, 2012



Brachiopod Ohio
From Bobby Mikkelson, 2012



Coral

Science Name - Tetracoral Fp.78



1 p. MN Devonian Shale
5



Like a Cuttle
p.130
Glenn, SD 1999

Sand Dollar
Salinas CA 2012

Read me.

Fossil Found

Belle Fourche area
man makes a rare find



Archaeologist seeks a creative answer



The Story of Cemetery Clay

1. Selected the Clay used to make the Mummy Clay (MCC).

2. Used the Mummy Clay to make the Mummy Clay (MCC).

3. The Mummy Clay (MCC) is used to make the Mummy Clay (MCC).

4. The Mummy Clay (MCC) is used to make the Mummy Clay (MCC).

5. The Mummy Clay (MCC) is used to make the Mummy Clay (MCC).

Fossil Recipes

Hard Bodies + Water + Fast + Deep + Minerals + Fossils

1. Hard Bodies: A few soft parts have been fossilized but it is unusual. (Dinosaur, leaf, jellyfish, frog)

2. Water and Mud: The mud presses out the air and the water carries minerals for the fossilization process.

3. The specimen has to be buried fast for no scavenging, so animals do not eat it or drag the bones away.

4. It has to be buried deep to cut off all oxygen, so there is little aerobic action to rot the body.

5. Next, minerals are brought in by water to replace the hard tissues to make the fossil. (Example: ammonite)

4

“Read Me” area.

Decorah
Crinoids, Clams,



5

Triceratops Bowman, ND 1998



Edmontasaur

Edmontasaur skull - 1858
Edmontasaur - 1858



Six foot Salamander model



Pre Flood sea bed





Six foot diameter Ammonite

Lez Verez Military Memorial honoring all veterans.

Enlarged Diatom models





8

**Military
Memorial**

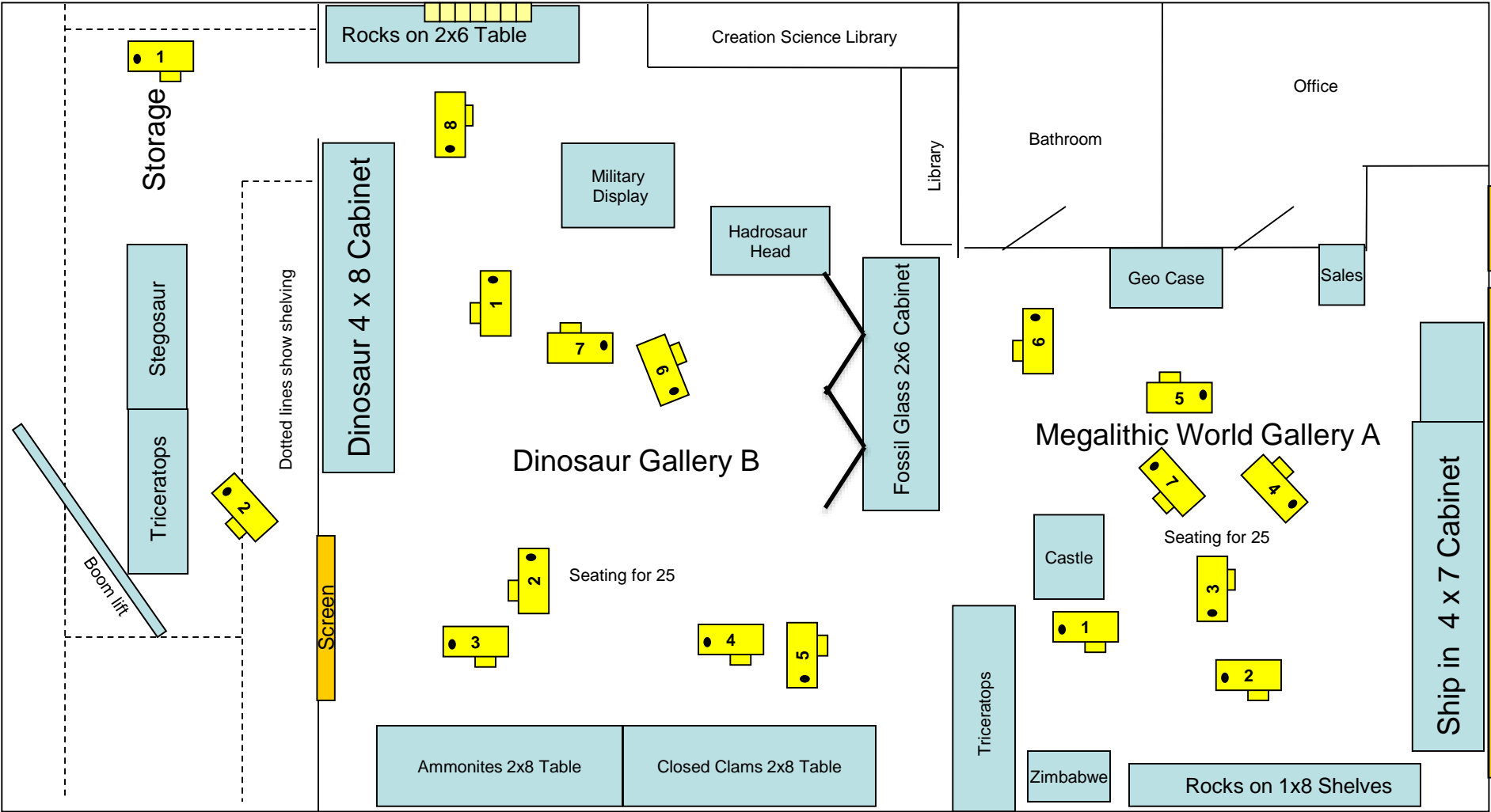
The Megalithic & Geology Gallery A

This is a rotating display introduced in February 2013. It shows how life got started after Noah's Flood. To go with this year's geology class about 100 pounds of rocks & minerals are on display. More signage has been added for self guided tours. It will remain until Feb. 2014

The Feb. 2013 "Plan."



Camera position for photos



Zimbabwe Model



1

The area around Zimbabwe

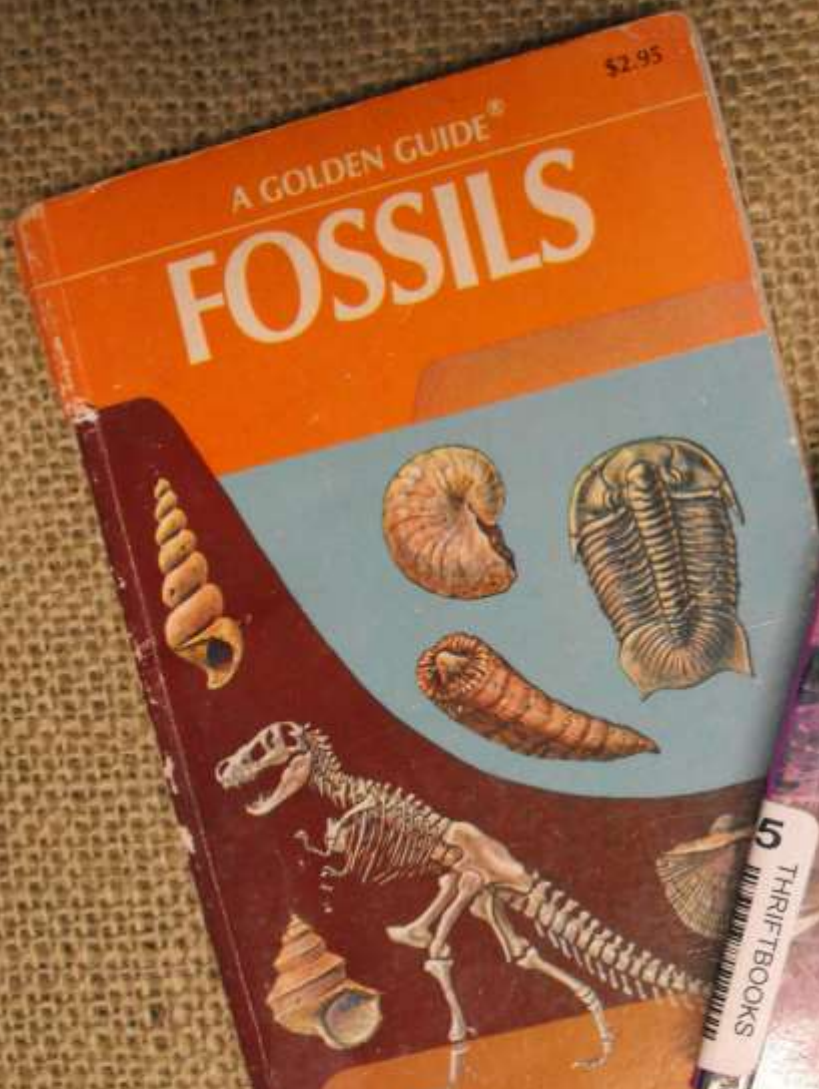


1

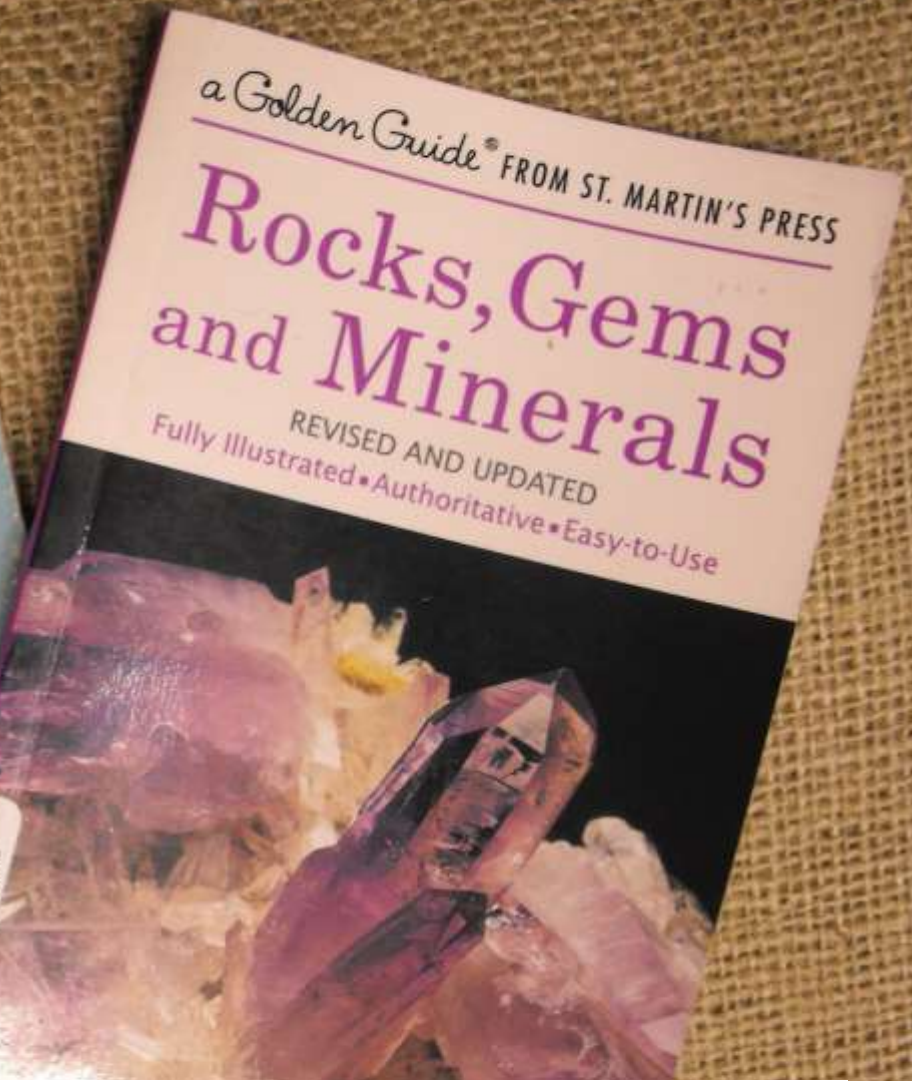


2

Rocks and minerals



5 THRIFTBOOKS



Nearly all rocks, minerals and fossils have a name and page number from these two books so students can look up more information on the displays. Persons who have loaned or donated samples are given credit on the labels. See the following slides.



Palm Fossils Mt. Baker WA.
Found at 800 ft. level 1995 Fp.63



Cave Flow Stone with
Brown Garnets p.85



Ammonite
Texas - from Bob Helfenstine Fp.123-130





Guard House Model
Model based on an 8th century BC house at
the St. Paul Mts. (Sardinia), Italy. The
display is based on the model of the house
excavated near the St. Paul Mts. (Sardinia)
and by the Museum (1971)

3

4 foot Phoenician Ship



Viking axe models. The above model's tag says: A Scandinavian Battle Axe of the Middle Ages (c.1000 AD) found near Norway Lake, MN. Museum model is based on this axe. Disk (Rt) is Viking compass. Bowl carries water for a loadstone compass

3b





Phoenician bust

Easter Island Bust

Crinoid sculpture

All by Russ

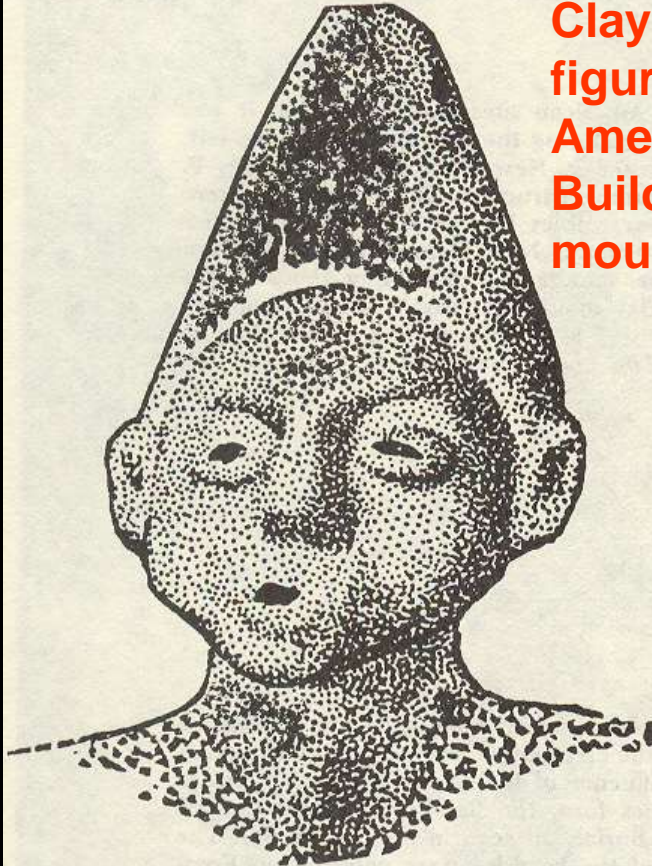


Model Russ made of a Viking Compass.

Cuneiform tablet of Clay 2000 BC showing the Pathagerous Therom



Clay Phoenician
figurine from an
America Mound
Builder burial
mound.



Phoenician
figure from
Cyprus



The Phoenician at home and abroad retained his characteristic high-crowned hat, the *hennin*, worn on formal occasions. It is here illustrated by two terracotta figurines. Left, an American example, excavated from a Mound Builder burial mound. Right, a figurine from Hagia Irene, Cyprus Museum. Both figurines date from the 8th to 6th century B.C. For a comparison of the alphabets used by the Phoenician colonists in Iowa and in southern Spain, see page 162. From S. D. Peet, *The Mound Builders*, 1892.

Similarities in pottery find...

	Phoenicia	Iowa	Spain
Sound	Style of Syria and Lebanon (Phoenicia) 800-600 B.C.	Style of Punic settlers of Iowa 800-600 B.C.	Style of Punic settlers of Spain 800-600 B.C.
b	𐤁	𐤁, 𐤁	𐤁, 𐤁
g	𐤂	𐤂	𐤂
d	𐤃	𐤃	𐤃
h	𐤄	𐤄	𐤄
w	𐤅	𐤅, 𐤅	𐤅, 𐤅
z	𐤆	𐤆, 𐤆	𐤆
h	𐤇	𐤇	𐤇, 𐤇
t	𐤈	𐤈	𐤈
k	𐤉, 𐤉, 𐤉	𐤉	𐤉, 𐤉
l	𐤊	𐤊	𐤊
m	𐤋	𐤋	𐤋, 𐤋
s	𐤌	𐤌	𐤌
, i	𐤍	𐤍, 𐤍	𐤍, 𐤍
s	𐤎	𐤎	𐤎
t	𐤏	𐤏	𐤏

Similarities in writing
800 BC...

The Phoenician (Punic) colonists of Iowa used an alphabet that shows clearly that their homeland was in the Iberian peninsula. The Iowa inscription was found at Davenport in 1874, and is written in the Iberian alphabet whose sound values were determined in Spain 60 years later. Failure to identify the Iowan alphabet led archeologists until now to suppose that the Davenport finds were fraudulent.

Giant 8 foot Beaver Model



Great Beaver Model
Made from 100,000 pieces of wood by
the U.S. Forest Service, 1910. The
model is made of wood and is
the largest beaver model in the
world. It is located in the
Forest Service Museum, 1910.



King of the Beaver
The beaver is the largest rodent in North America. It is a very important animal because it builds dams that create wetlands. Wetlands are home to many other animals and plants. The beaver is also a very important animal because it helps to keep the water clean. It does this by building dams that slow down the water. This gives the water time to settle and the dirt and other things in the water to sink to the bottom. The water that comes out of the dam is much cleaner than the water that went in.





**Early Homes & Totem Pole African
petroglyph of Sirius A & B Star system.**



How to use the Petroglyph
The "Stone Age"
The "Stone Age" is a term used to describe the period of human history before the invention of writing. It is divided into three main periods: the Paleolithic, the Mesolithic, and the Neolithic. The Paleolithic period is the longest and is characterized by the use of simple stone tools. The Mesolithic period is a transitional period between the Paleolithic and the Neolithic. The Neolithic period is characterized by the use of polished stone tools and the invention of agriculture and domestication of animals.

Totem Pole
Totem Poles are tall, carved wooden poles that are decorated with various designs and symbols. They are a traditional part of many Native American cultures and are used to tell stories and represent family lineages.

ca 3000 1000 AD
Neolithic Petroglyphs

Tower of Babel





5

Fossil gifts for a contribution.



5

Rocks and fossils



Rose Quartz & Conchites p.78
Crystallized with tourmaline that took the heat of lava



Jasper, Red p. 80
Little Falls, MN. 1996



Geode
Geode Guadalupe, CA. 20011



Zink Smithsonite p.47



Quartz Crystals with Iron Oxide p.78:



Jasper, Purple, p. 80



Galena, (Lead) Mexico



Chalcedony p.80
On loan Joshua Morrison 2013



Tourmaline p.95
Associated with Aluminum & Boron on loan Joshua Morrison 2013



Quartz Clear Crystals p.76



Conglomerate p.128



Biotite Granite (Black smocks) p.111



Serpentine p.107
Associated with oil reserves.



Gypsum (Selenite) Brazil p.67
Precipitated from evaporating sea water. Massive beds are a result of Scott's Flood.



Quartz - Amethyst Mexico p.78,80



Gold Ore Drill Sample p.36 Lead, SD



Like Meteorite Iron p.40



Gneiss, Granite p.138
Silver often associated with it.



Agate & Pseudo-Fossil/Conchites p.78
Conchites 24 inches tall took the heat of lava

Quartz Clear Crystals p.76



Quartz - Amethysts Mexico p.78,86

Conglomerate p.128



Gold Ore Drill Sample p.36 Lead, SD

Biotite Granite (Black specks) p.111



Like Meteorite Iron p.40

Serpentine p.107 Associated with oil reserves.



Gneiss; Granite p.138 Silver often associated with it.

Gypsum (Selenite) Brazil p.67 Precipitated from evaporating sea water. Massive beds are a result of Noah's Flood.



Agate & Pseudo-Fossils/Concretions p.78 Concretions are masses that look like fossil leaves.

s Ash 1980

Fish Skeleton in Diatoms Longport Mine, Terry Barns, 2012, Pp.134



History Written in Stone

The photo shows a human handprint found in Cretaceous rock in the same layer with the Dinosaur bones and footprints. (Which shows dinosaurs and humans lived together). The fossil handprint is so subtle, but it displays impressions of the thumb, impressions of the basic webbing between the thumb and index finger, and the impression left by penetration of the middle finger into the mud. It was found near Dapn House and identified by Cliff Beach in 2006 and is in his museum in Dapn House, TX. <http://www.museumofhandprints.org/>

That's right, a man was there during Flood waters. He stepped on the mud and braced himself with his hand. Every 12 hours, as the water in, more mud was washed in by Noah's Flood. That's how we could find and preserve the print.

2006 was a turning point in the beginning of the Flood (day 41) to day 150 when the Flood waters were receding. During this time, humans and large animals were in higher ground and the land. That is also where the large animals like dinosaurs and mammoths in the youngest strata. The last strata laid down by the flood.








5

Hadrosaur Sacrum, Bear Skull, and Badger skeleton.

A portable rock collection that students study to see sedimentary, igneous and metamorphic rocks. The paper is a quiz.

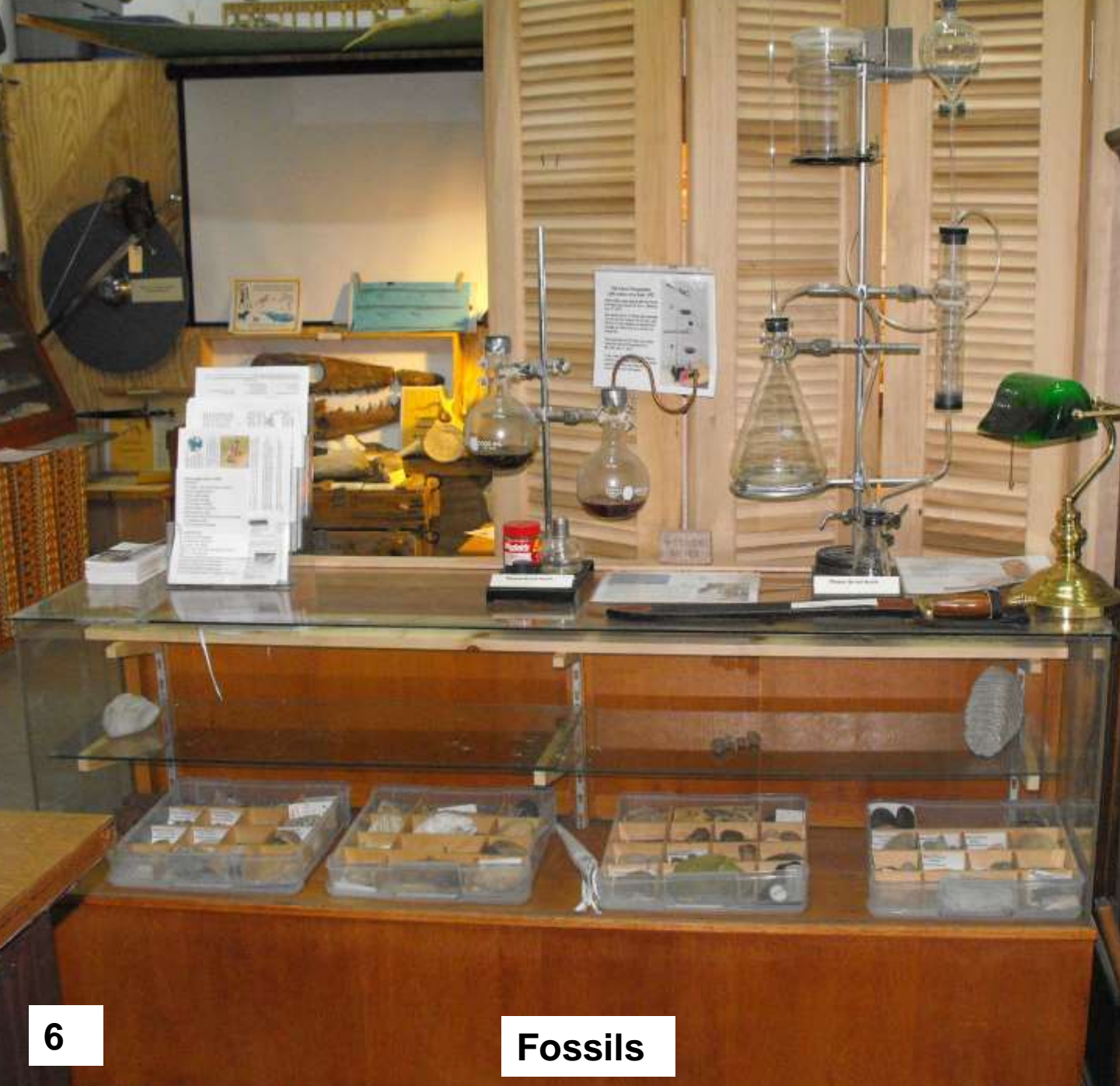
QUIZ SHEET Rock Guess It Game

Name	Type	Notes
Minerals: Variscite		Fossil
Fossilized Wood		Fossil
Porphyry	Igneous	Fossil and M: Baker-volcano
Yellow granite	Igneous	Day 3 Basement rock
Slate	Metamorphic	Day 3
Agate	Sedimentary	Day 3 in Flood from alive
Sandstone Tan	Sedimentary	Fossil
Quartz	Igneous	Day 3 Basement-rock Chemically weathered
Magicaly in matrix	Sedimentary	Fossil Green Ford
Serpentine	Sedimentary	Fossil
Schistose rock	Sedimentary	Fossil
Tricolored Variscite	Sedimentary	Fossil
Comprehensive	Sedimentary	Fossil
Shale	Sedimentary	Fossil
Dark Quartz	Igneous	Day 3 Basement rock
Limestone Connexion	Sedimentary	Gravel like
Red Jasper		Day 3 Dark jasper stone

428



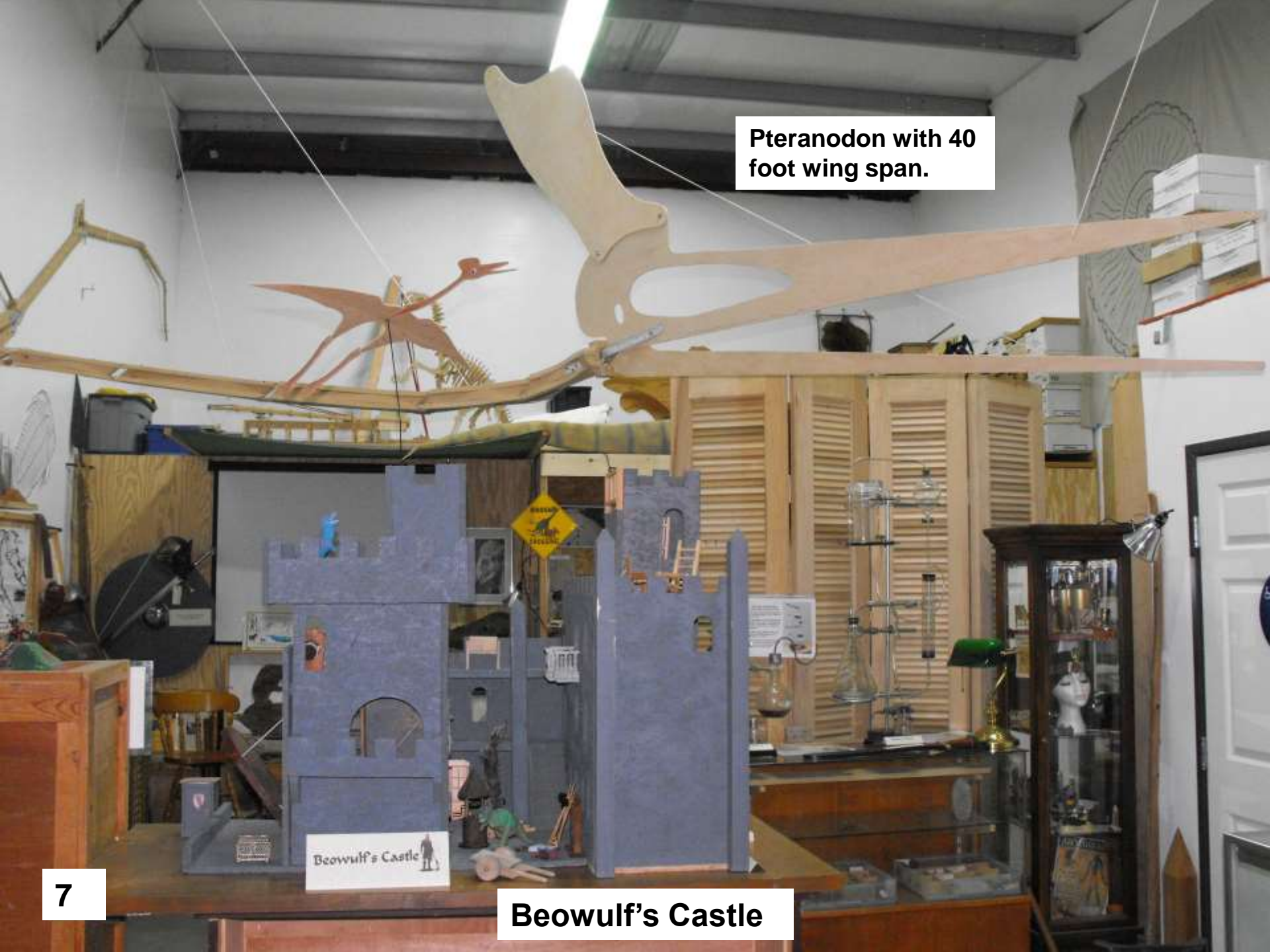
Egypt/ Hebrew exhibit will be expanded for 2014 rotation.



6

Fossils

Pteranodon with 40 foot wing span.



7

Beowulf's Castle

Pteranodon with 40 foot wing span.



Store Room

There is a Triceratops &
Stegosaurus display here as well
as storage boxes.



Salamander Skull - Body 8 Foot Long
Science Name - Metaposaur



Tricia teaches on how fossils were made by Noah's Flood.

Boom Lift

I rigged a 16 foot long 2 x 4 with a 4 to 1 block and tackle to lift boxes off the shelves. I am not to lift more than 5-8 pounds because of a bad back and two hernias. My students help when I need a lot moved but for one or two boxes this works nicely.



2013 Feb Museum Visitors













VBAFB 12 people



Paul's Bible study May 2013

Military Memorial

Lez Verez Military Memorial Honoring all veterans.





B17 Clock, Compass & Altimeter 1940











Swedish Army Field Telephone similar to those used in WWII. Crank in the front rang the other unit. Hand wires carried the signal to the other twin unit. They were often more reliable than radios as the vacuum tubes were subject to breakage when the unit was dropped. The hand wire phone system meant the message could not be intercepted by the enemy. Think about what it would be like to have cell phones on the battle field. What would the pros and cons be?



The M17 Paratrooper

The M17 Paratrooper was a standard issue for the United States Army during World War II. It was a light, compact, and reliable rifle that was designed for use by paratroopers. The M17 was a semi-automatic rifle that was powered by a gas-operated action. It was known for its accuracy and reliability, and it was a popular choice among paratroopers.

The M17 was a standard issue for the United States Army during World War II. It was a light, compact, and reliable rifle that was designed for use by paratroopers. The M17 was a semi-automatic rifle that was powered by a gas-operated action. It was known for its accuracy and reliability, and it was a popular choice among paratroopers.



In honor of our military. "Never was so much owed by so many to so few."



Flyers

We wanted to invite your group to come along with the Lompoc homeschool to our Adventure Safaris Museum April 29 from 10 -12 noon with a scavenger hunt and a special at \$5 per person. It is completely remodeled with many new dinosaur bones as well as a whole new Gallery on the "Megalithic World" see announcement below. A drawing will be held for a unique map Russ has designed that shows where all the people went after the Tower of Babel based on The Table of Nations in Genesis 10. Hope you all can come. In Him, Russ

ADVENTURE SAFARIS PRESENTS 'THE MEGALITHIC WORLD'

Megalithic World - How civilization was restarted after Noah's Flood.

A main highlight is Russ' 4 foot long model of a Phoenician Swan Ship. These were the ships referred to in 2 Chron. 9:21 as the "Ships of Tarshish" Archeological artifacts show that the Phoenicians "Ruled the Seas" from about 2300 BC to beyond the time of the Apostle Paul. With a Chart of the Atlantic Ocean and reproductions of ancient artifacts the exhibit shows trade routes to Southern Africa, Niagara Falls, NY, Tucson AZ, St Louis MO, Honduras and Brazil, South America.

Also shown will be the trade routes of the Vikings who had a colony in Minnesota at 900 AD and how Indus Valley, India seafarers may have had a colony on Easter Island around 2000 BC. Other model highlights:

*Beowulf's Castle

*Tower of Babel

*Zimbabwe

*Ancient navigation tools & weapons

*Petroglyphs of dinosaurs and humans together

*Geology – Displays of rocks and minerals round out the exhibit and are related to this years lessons on geology

* Les Verez Military Memorial honoring our military.



Russ has renovated and added new bones to his permanent display of dinosaur, marine and mammal fossils.

Students will enjoy these displays and will be challenged to a scavenger hunt to see what they can discover about the ancient world. Parents will be amazed at this exhibit as they learn about world history not taught in schools today. Students can buy dinosaur bone reproductions as well as books and DVDs in our gift shop so bring some dollars for that!

Museum tours by appointment only. Lasts about 1- 2 hours with 1-2 twenty five minute slide presentations depending on your groups wishes. Suggested donation of \$6 per person. Russ & Tricia McGlenn 805 588 3353: Email russmcglenn@juno.com Web www.adventuresafaris.org Suit 3 1360 W. McCoy Ln. Santa Maria 93455

Scavenger Hunt (Older) - FIND:

BONES

Goliath giant femur

Velociraptor egg

Apatosaurus egg

Three foot Trilobite

Edmontasaurus tooth

Apatosaurus claw

Dinosaur hip bone called a femur

Toe bone that looks like an arrow head

Triceratops tibia

Ammonite from Nepal

Mishipishu Dinosaur

ARTIFACTS

Catapult (2 models)

Spaceman foot print

Copper "Ox Hide"

Canoe Petroglyph

Easter Island Head

Pterosaur/Pterodactyl head crest (2 models)

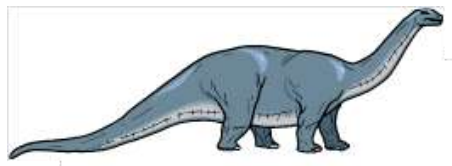
Argentina Closed clam shell

German bolt action rifle WWII

Shrimp borrow in ocean bed

Human foot print with dinosaur foot print

Star chart from before Noah's Flood



Scavenger Hunt (Older) - FIND:

BONES

Goliath giant femur

Velociraptor egg

Apatosaurus egg

Three foot Trilobite

Edmontasaurus tooth

Apatosaurus claw

Dinosaur hip bone called a femur

Toe bone that looks like an arrow head

Triceratops tibia

Ammonite from Nepal

Mishipishu Dinosaur

ARTIFACTS

Catapult (2 models)

Spaceman foot print

Copper "Ox Hide"

Canoe Petroglyph

Easter Island Head

Pterosaur/Pterodactyl head crest (2 models)

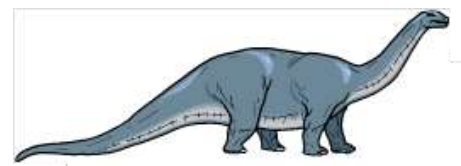
Argentina Closed clam shell

German bolt action rifle WWII

Shrimp borrow in ocean bed

Human foot print with dinosaur foot print

Star chart from before Noah's Flood



How Did Russ Get Started?

For students who like collecting I have a few ideas to share. I want to encourage young people that their talents & collections can be used of God.

When a youth, I always wanted to give something I made myself to my Mom & Dad or Grandpa & Grandma for Christmas. Also, I did not have much money so I made things like camping gear for my safaris from scratch (Mom sewed things on her machine for me according to my specifications)

In the 50's, when I was about ten, I collected many stones & shells when we went to a beach cabin once a year. For my Aunt, I took an old shampoo bottle (most every container was glass not plastic!) and put the stones and beach materials into it for a Christmas present.

One time my Mom had the church missionary ladies over for tea. I came to the back porch and asked if she had a jar. She said "Wait there and I'll bring you something." She figured I had something alive in my pocket and didn't want to upset the ladies. It turned out to be a frog I had collected!

Mom was very patient with me as she was a collector, too. She took in a sickly lizard, gold fish, and other animals from neighbors. She would nurse them back to health and we had them as pets for many years.

I am putting my collections in the museum for others to enjoy. Exhibits like the dinosaur & mammal bones help students learn about God's handiwork.

If you are making a collection, have a goal or theme in mind, Categorize and label the objects and make a mini museum that shows God's handiwork. If you need help let me know.

The original bottle given to Russ's Aunt.

